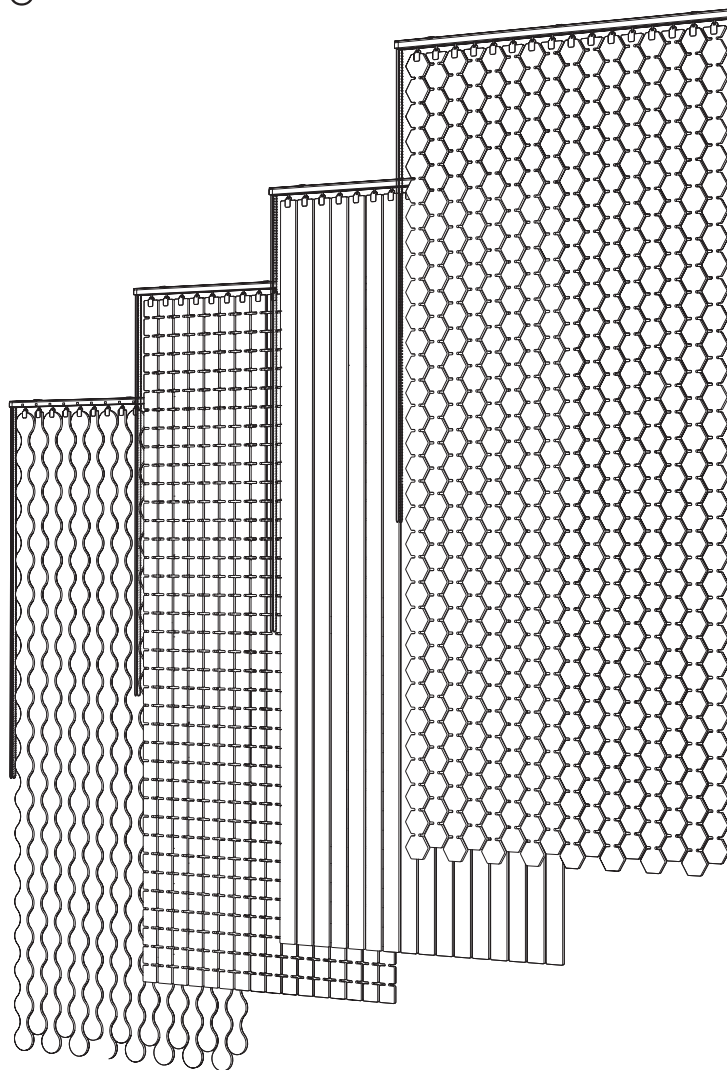


IMPACT ACOUSTIC®



**Pixels** *by Rafa Ortega*

Retractable Room Division

746.12.01.000.00

746.12.02.000.00

746.12.03.000.00

746.12.04.000.00

# PIXELS Retractable Room Division

## Product Overview

### 1 Verify and organize

Verify all delivered elements and organize them based on the included labeling of each part and the supplied drawings.

746.12.01-04.000.00

1

PIXELS Archisonic® Felt Slats x16

2

PIXELS Rail, L1250mm x1 ,chain and wire operation, white

3

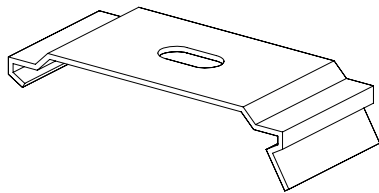
PIXELS Hanger 12mm, bag of 18 (16+2 spare)

2.1

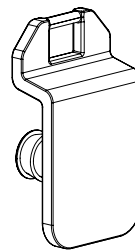
rail mounting clips x3

3.1

Safety ring,  
bag of 18 (16+2 spare)



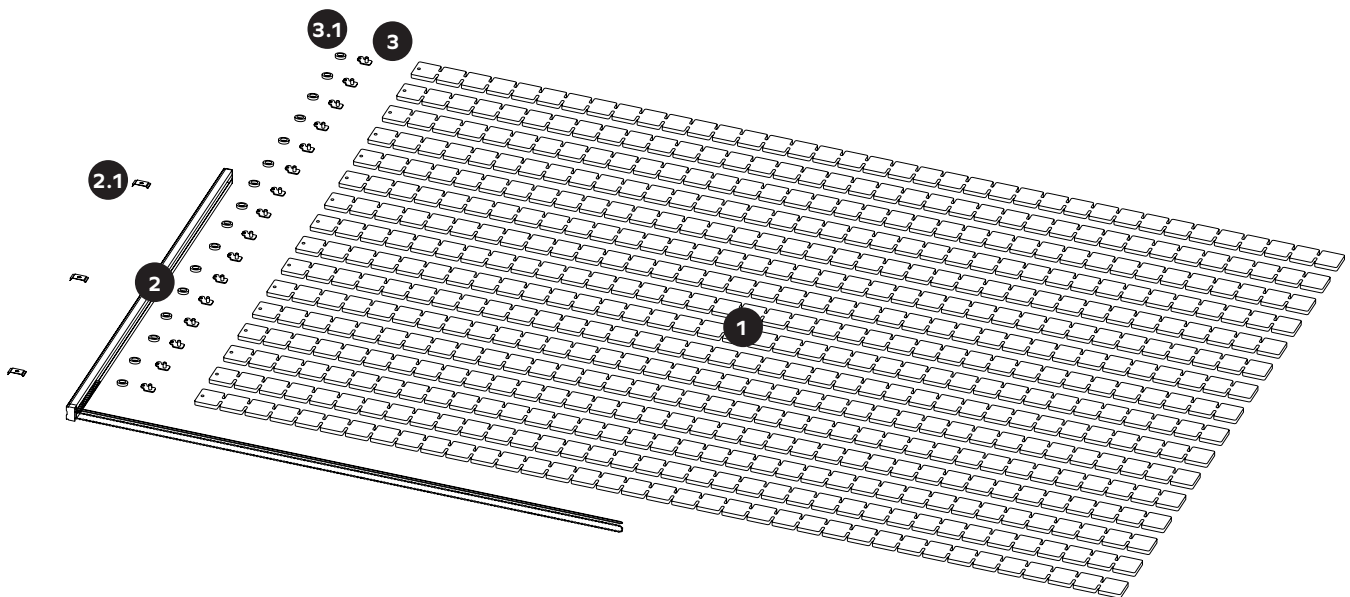
2.1



3



3.1

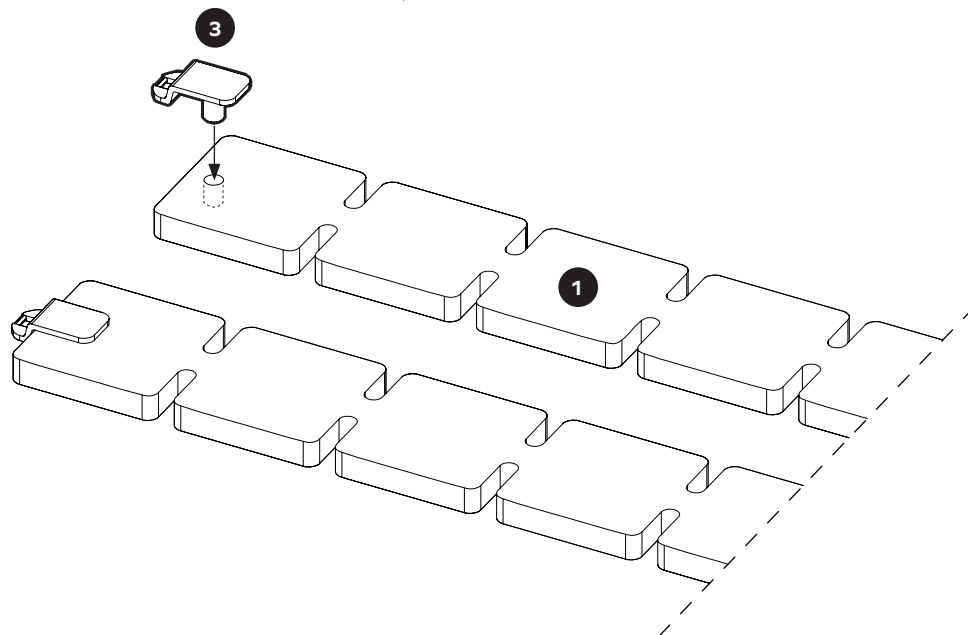


# Pixels Retractable Room Division

## Assembly Guide

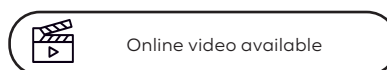
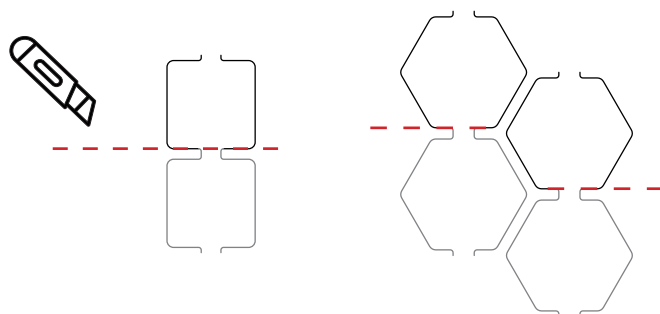
### 2 Assemble PIXELS slats

Attach the Hangers (3) to the Felt Slats (1) by inserting the hanger plug into a circular opening at the end of each slat, as showed bellow. Make sure the hanger is pushed all the way in and secure in place.



### 2.1 On-site adjustments

The height of the slats can be adjusted on site if needed. For this, we recommend to cut the slats at the junction between the shapes, following the diagram below:



Online video available



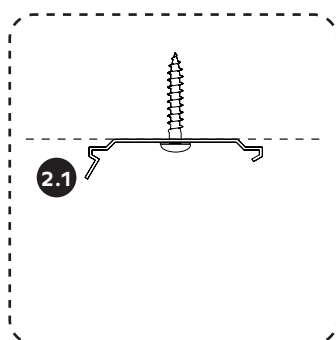
# Pixels Retractable Room Division

## Installation Guide

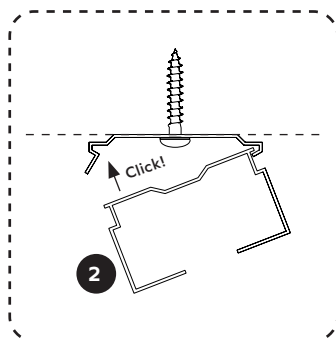
### 3 Install the rail

Install the rail (2) to the ceiling using provided clip mounts (2.1) following the steps below. The selection of proper screws and/or expansion plugs should be verify with the type of the ceiling the rail will be mounted to. **Different types of screws are not provided.**

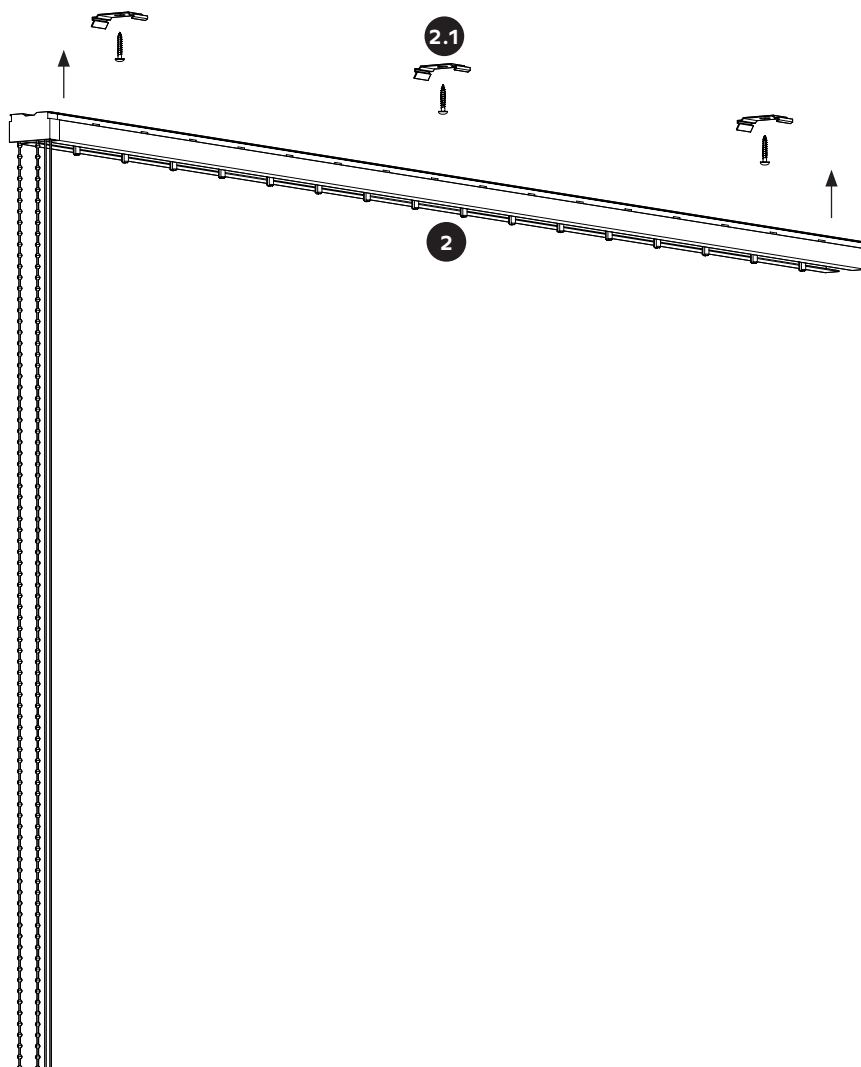
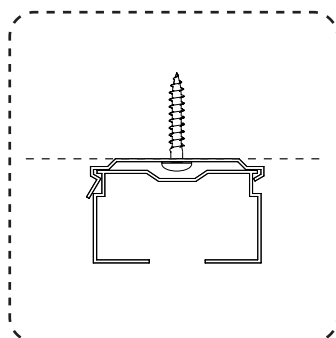
#### 3.1 Install mount clip



#### 3.2 Push in the rail



#### 3.1 Done!

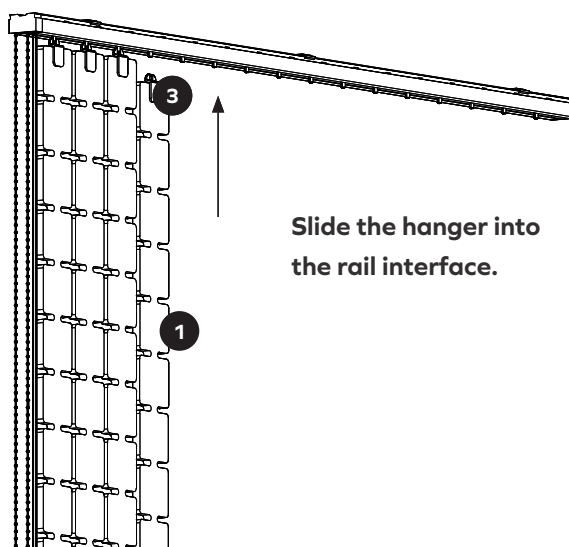


# Pixels Retractable Room Division

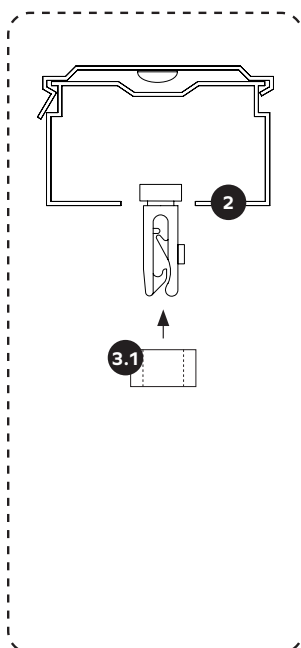
## Installation Guide

### 4 Install the slats into the rail interface

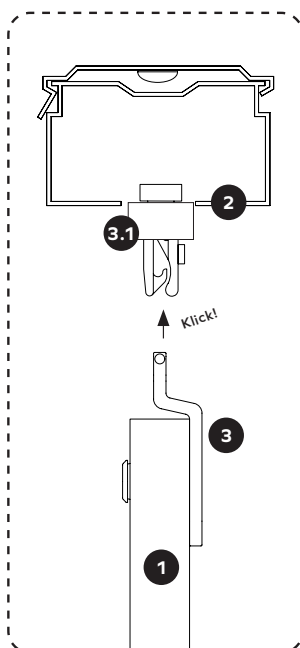
Hang the slats (1) with the pre-installed hangers (3) into the interface clips of the rail as shown below. Make sure that the safety ring (3.1) is attached to the interface clip before the hanger (3) is hooked in. Press the safety ring (3.1) down to secure the clip and hold the hanger in place.



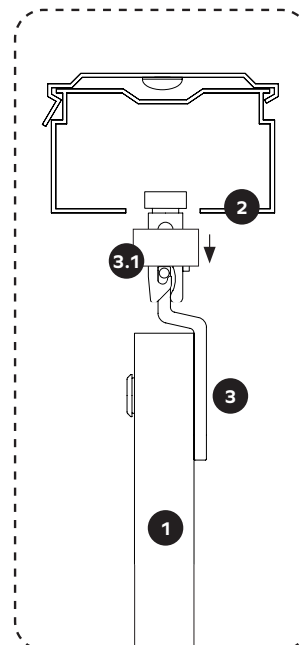
#### 4.1 Slide the safety ring over the interface clip.



#### 4.2 Hook the hanger into the interface clip.



#### 4.3 Secure the clip with the safety ring.

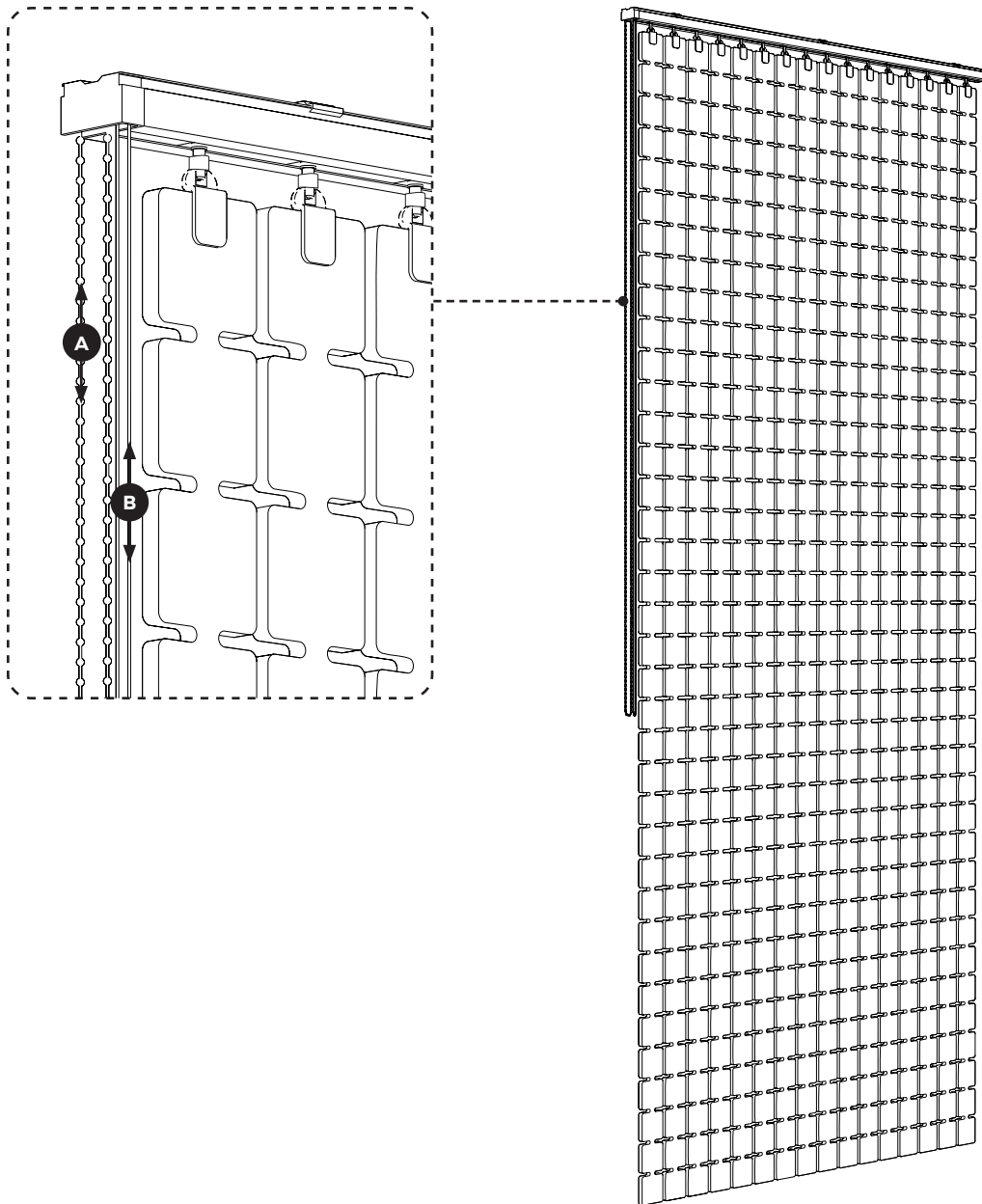


# Pixels Retractable Room Division

## Installation Guide

### 5 Use chain and wire to adjust the slats

You can rotate the slats using the chain (A) and retract the slats using the wire (B)



# Pixels Retractable Room Division

## Additional Information

### Online Resources

A variety of resources are available online for all of our products. Please visit the product's page for more information.



CAD files



Spec sheets and  
Installation Guide



Color families



Instruction  
videos



Associated  
products specs.

### Ordering Process

Our experienced team of Project Consultants will guide and support you throughout the order process. We fulfill the majority of our orders in as little as 21 days<sup>1</sup> from your first point of contact, allowing you to focus on what truly matters to you.



Contact our  
consultant

Quote<sup>1</sup>

48h



Order Confirmation

Production<sup>1</sup>

14-21 days



Dispatch

Transit

location based



Delivery

### Contact Us

Ready to make an impact? We are just an email or call away to discuss your project and answer any question.



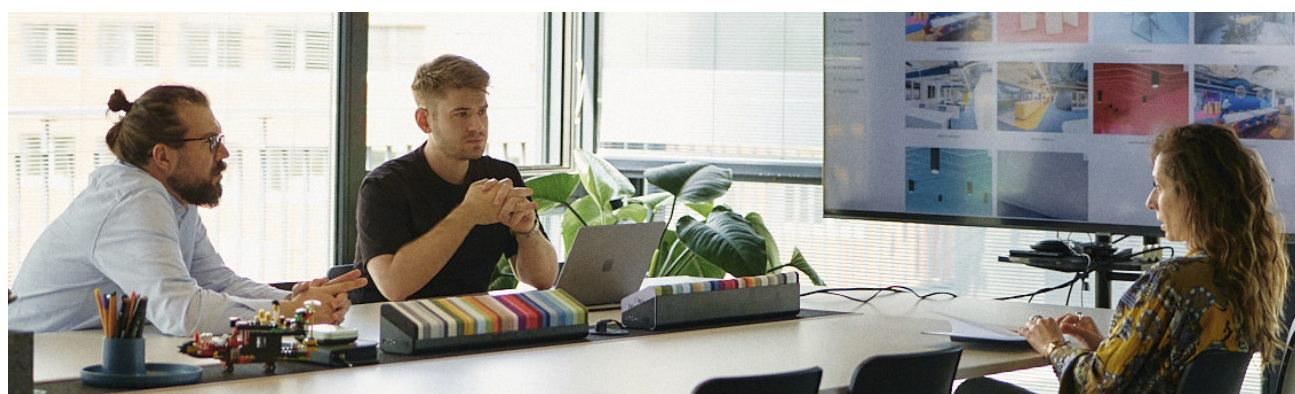
+41 41 244 14 00



connect@impactacoustic.com



Online form



<sup>1</sup> - Quote and Production times may vary.

**IMPACT ACOUSTIC®**  
Pixels Retractable Room Division rev.01-31.03.25

(Switzerland)  
(USA)  
(Philippines)

connect@impactacoustic.com  
usa@impactacoustic.com  
philippines@impactacoustic.com

(+41) 41 244 14 00  
(+1) 646 918 1581  
(+63) 285 80 02 50

#WeMakeAnImpact

# **#We MakeAn Impact**

[connect@impactacoustic.com](mailto:connect@impactacoustic.com) | [www.impactacoustic.com](http://www.impactacoustic.com)