

IMPACT ACOUSTIC®



# Rifteut

## Wall Covering

734.12.10.000.00

TECHNICAL DATA SHEET

# Riftcut Wall Covering



## Data

### Applicable article numbers

734.12.10.000.00

### Total Dimensions<sup>3</sup>

Height	2800mm	110"
Width	1200mm	47"
Thickness	12mm	0.5"



### Material

Wall Covering 100% PET (60% post-consumer) in 24 printed texture hues

### Weight<sup>1</sup>

12mm / 0.47" 2.4 kg/m2 0.49 lbs/sq.ft

## Included

PET Panels



Installation  
guide



Warranty  
2 years<sup>2</sup>



1 - all weights are nominal

2 - Impact Acoustic warranty terms apply

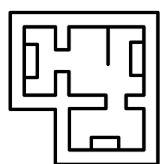
3 - all dimensions are nominal

# Riftcut Wall Covering

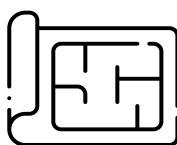
## Specification Guide

Ensure you make the perfect choice by choosing our solutions for your next project. To get started, simply define some basic information and constraints about your space. Then explore our range of standard solutions or contact us directly for a more in-depth discussion of personalised customized options.

### 1 Prepare this information:



Project Area

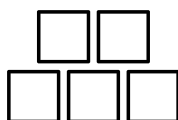


Plans



Other Considerations

### 2 Specify your Wall Covering:

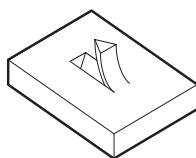


Quantity



Color

### 3 Mount type:



Undercover mount<sup>1</sup>



Spray adhesive

### 4 Article numbers:

734	Material Thickness <sup>2</sup>	10	Color	Mount type
734	12mm	10	112	00

**Example: 732.24.12.662.00**

Riftcut Wall Covering, 2800 x 1200 x 12mm, 112 - Shadow 20, 00 - Undercover mount

1 - Patent Pending No.102024000009088

2 - all dimensions are nominal

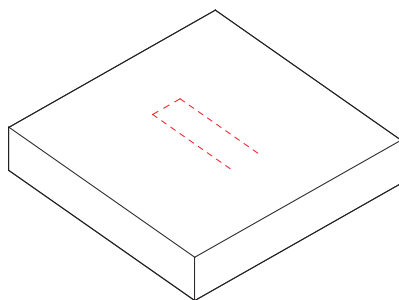
# Riftcut Wall Covering

## Installation Methodes Overview

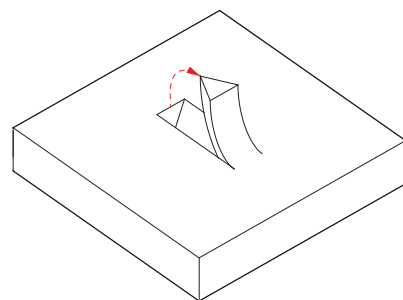
### Undercover Mount (standard) *Patent Pending<sup>1</sup>*

All our Wall Covering products come with pre-cut **Undercover** attachment points. Those points are distributed along the edge (10-15mm offset) and in the middle of the panel. **Undercover** mounting system allows for concealed mechanical attachment of the panel to the mounting surface. The **installation hardware** (screws, bolts) needs to be selected in accordance to the surface on which panels are applied, and are **not included**.

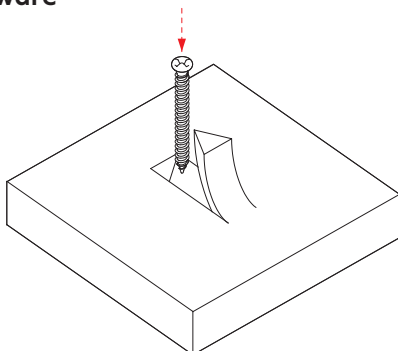
#### 1 Locate the Undercover cuts on the panel



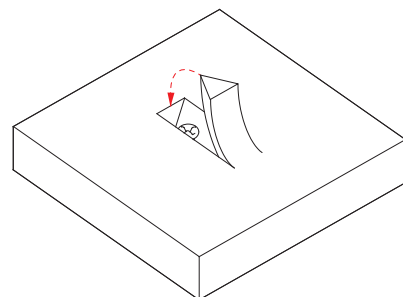
#### 2 Pull out the edge



#### 3 Install hardware



#### 4 Close



For full installation manual check our [product page](#).

## Alternative methods

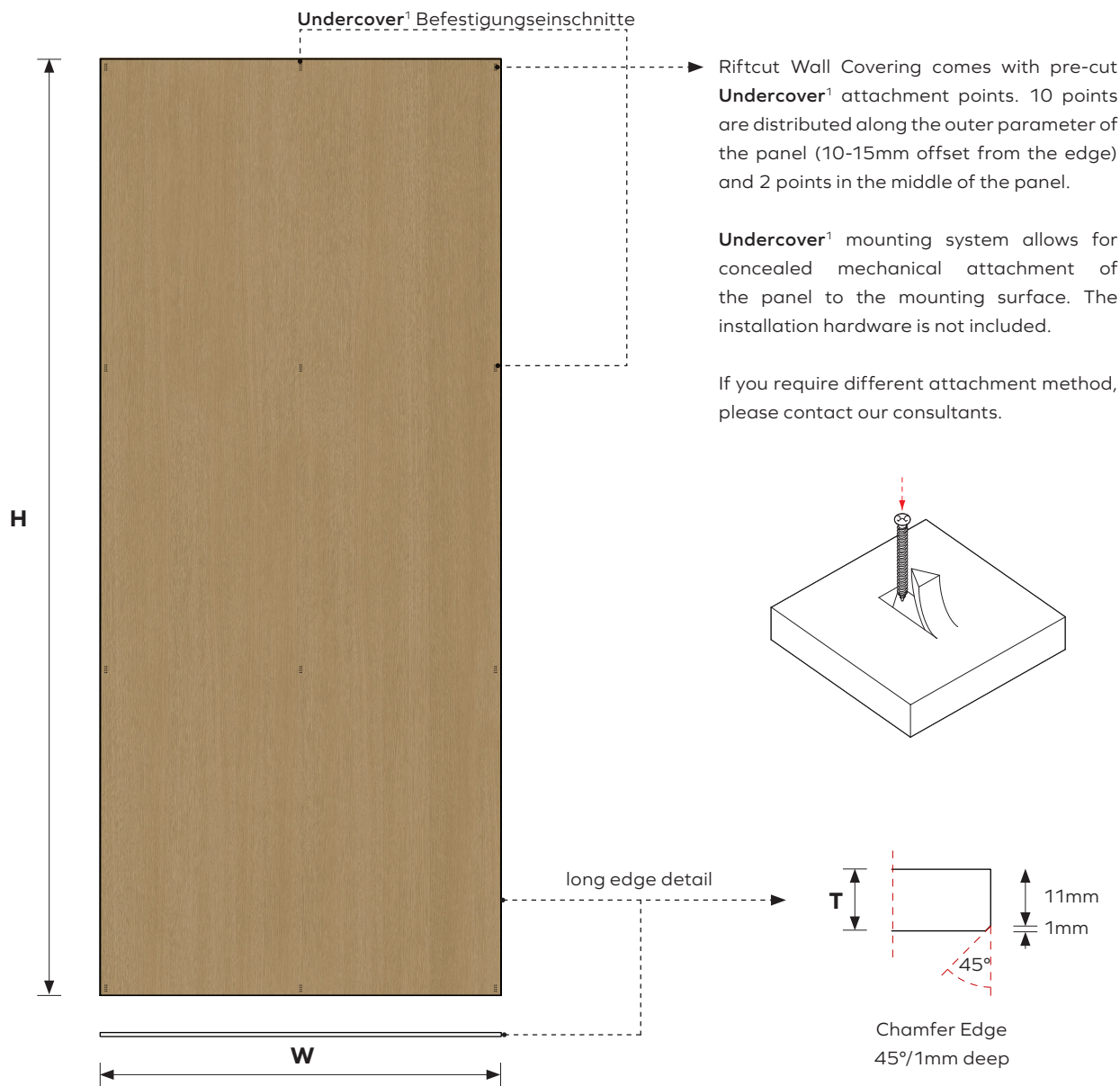
We offer **Spray Glue** as an alternative. For an advice on appropriate mounting method for your needs, please contact one of our Project Consultants.

Please note, that selected hardware for alternative installation methods is not included in a default delivery scope and needs to be accounted for separately.

<sup>1</sup> - Patent Pending No.102024000009088

# Riftcut Wall Covering

## Geometry Information



Dimensions table<sup>2</sup>

<b>H</b>	Height	2800mm	110"
<b>W</b>	Width	1200mm	47"
<b>T</b>	Thickness	12mm	0.5"



# ARCHISONIC®

## Riftcut

### A Synthesis of Nature and Innovation

Developed in collaboration with German veneer specialists Schotten & Hansen and Swiss designer Ina Rinderknecht, ARCHISONIC® Riftcut adds a natural touch to our acclaimed Felt range.



Archisonic Riftcut Flax 50

### Color options

The printed shades form the basis of 24 colour spectrum, offering interior designers a sophisticated range of options linked to natural dyes.



### Sustainable Ink

CP65 and RoHS3 compliant



### Order a free sample set



# ARCHISONIC® Felt (Printed option)

## Material Specification

<b>Product Name</b>	Archisonic® Felt	
<b>Content</b>	100% PET (60% certified post-consumer content)	
<b>Thickness<sup>1</sup></b>	12mm (0.47")	
<b>Max. Size</b>	1200x2800mm (47"x110")	
<b>Acoustic<sup>2, 4</sup></b>	<b>ASTM:</b> NRC=0.6 <b>ISO:</b> $\alpha_w$ =0.65	
<b>Density<sup>1</sup></b>	2400 g/m <sup>2</sup> (0.49 lbs/ sqft)	
<b>Color Fastness<sup>4</sup></b>	<b>Class 6</b> ISO 105-B02:A1	
<b>Color</b>	<b>24</b> printed finishes.	
<b>Maintenance</b>	To prevent dust and stains, regularly dust or vacuum with a soft brush. Avoid tools that might scratch the surface. Use mild detergents sparingly for tough stains, blotting instead of rubbing with a microfiber cloth. Test cleaning methods on a hidden area first to check for adverse effects.	
<b>Lead Time<sup>3, 4</sup></b>	21 days	
<b>Fire Rating<sup>4</sup></b>	DIN EN 13501-1: <b>B-s1, d0</b>	ASTM E84 <b>Class A</b>
<b>VOC Emission<sup>4</sup></b>	28 Days French Regulation <b>A+</b> ASTM E84 <b>Pass</b> Breeam® (International, UK, NL, SE, NOR) <b>Exemplary</b> CDPH (CDPH/EHLB/Standard-Method V1.2) <b>Pass</b>	
<b>Certifications<sup>4</sup></b>	Declare label, Cradle to Cradle, UL Environmental Product Declaration, Member of US Green Building Council, Ecobau 1st Priority, Climmate-KIC, VOC emissions in LEED EQ credit (low-emitting products), SCS Recycled Content	
<b>Ink Certifications</b>	UL Greenguard, No NVC, No VOCs, No TPO, Vegan, compliant with California Prop65 (CP65) and European Directive RoHS3	
<b>Durability</b>	Contract	

1 - all values are nominal    2 - measured with 300mm air cavity    3 - depending on the location and type of product    4 - values refer to the non-printed option



Climate-KIC is supported by the EIT, a body of the European Union



**Declare.**



# Riftcut Wall Covering

## General Information

### Online Resources

A variety of resources are available online for all of our products. Please visit the product's page for more information.



CAD files



Spec sheets and  
Installation Guide



Color families



Instruction  
videos



Associated  
products specs.

### Ordering Process

Our experienced team of Project Consultants will guide and support you throughout the order process. We fulfill the majority of our orders in as little as 21 days<sup>1</sup> from your first point of contact, allowing you to focus on what truly matters to you.



Contact our  
consultant

Quote<sup>1</sup>

48h



Order Confirmation

Production<sup>1</sup>

14-21 days



Dispatch

Transit

location based



Delivery

### Contact Us

Ready to make an impact? We are just an email or call away to discuss your project and answer any question.



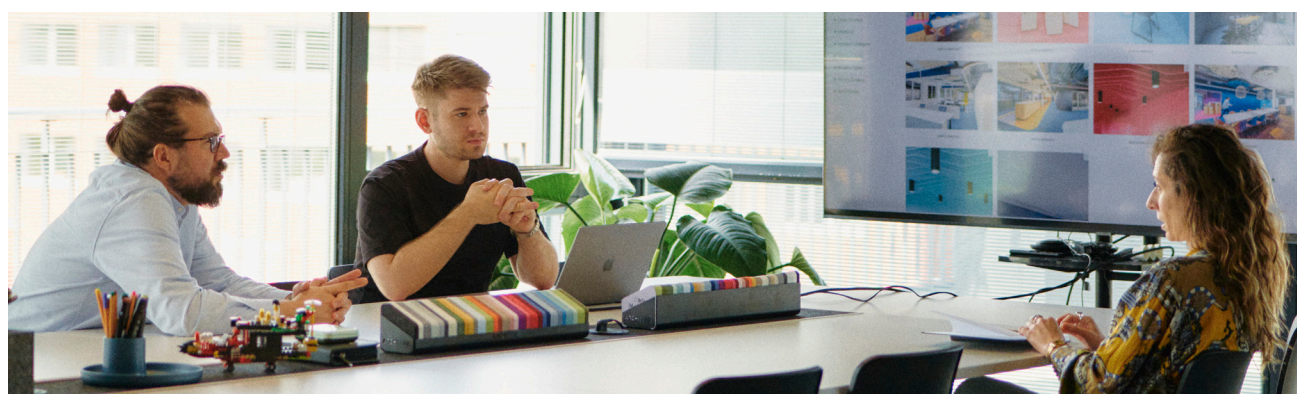
+41 41 566 55 55



connect@impactacoustic.com



Online form



<sup>1</sup> - Quote and Production times may vary.

**IMPACT ACOUSTIC®**  
Riftcut Wall Covering rev.01 - 16.05.24

(Switzerland)  
(USA)  
(Philippines)

connect@impactacoustic.com  
usa@impactacoustic.com  
philippines@impactacoustic.com

(+41) 41 244 14 00  
(+1) 646 918 1581  
(+63) 285 80 02 50

#WeMakeAnImpact



# *#We MakeAn Impact*

[connect@impactacoustic.com](mailto:connect@impactacoustic.com) | [www.impactacoustic.com](http://www.impactacoustic.com)